

# POWER Source

August 2007

Customers first.  
Energy that lasts.



It's just for kids! You can find puzzles and other fun ways to test your energy smarts in this month's newsletter. ■

## LGE & E

an e-on company

### 5 minute task

Turning lights off is good for the environment. Is there a light that everyone in your family forgets to turn off? Make a little sign to hang next to the light switch to remind them. ■

## Use your super powers!

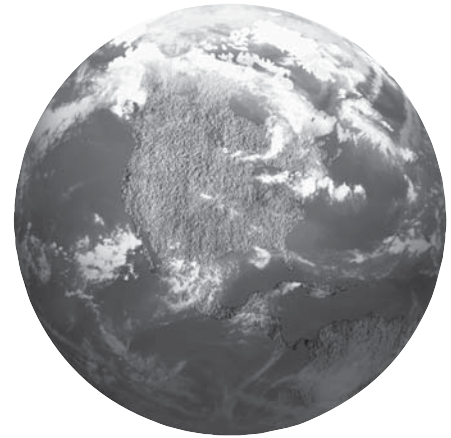
### Be a hero and save your world

It's amazing! You can help save the earth – and save energy – by doing some really simple things that are within your power.

Finding cool new ways to save electricity is good for the environment because it could help reduce greenhouse gases, and could even reduce the number of power plants we'll need for the future.

Using less energy is also good for your family because it saves money on their monthly utility bill. Try some of these tips and come up with your own ways to help save the earth!

- **Turn it off!** When you're finished playing video games, watching TV or using the computer, be sure to turn it off to avoid wasting energy.
- **Stop running.** When you're brushing your teeth, don't let the water keep running. Wasting water wastes electricity because supplying water and cleaning it up after it's used is the biggest use of electricity in most cities.



- **Here's a hot tip!** Decide what you want to eat BEFORE you open the refrigerator. As soon as you take it out, shut the door quickly. It's better for the food – and for your parents' energy bill!
- **Stay cool.** When it's hot, drink a cold glass of lemonade or water instead of turning the air conditioner on full blast.
- **Hold it!** Hold a ribbon up to the edge of a window or door. If it moves, there's a draft you should tell your parents about.
- **Take it outside!** Got a comic, magazine or book you want to read? Head for your backyard. The sun is a great natural light source. ■



## A word about birds

Have you heard of the peregrine falcon? The fastest bird on the planet – which dives at more than 200 miles per hour – used to be on the endangered species list but its numbers are growing since the chemical DDT was banned.

We're trying to help peregrine falcons by building "nesting boxes" for them around our power plants. Power plants

have tall stacks and cooling towers that are a lot like the birds' natural roosting sites.

In fact, a female peregrine recently laid four eggs in one of the nesting boxes and two of the eggs hatched! The baby birds have been tagged so people who study wildlife can watch them and see how they're doing in the future. ■

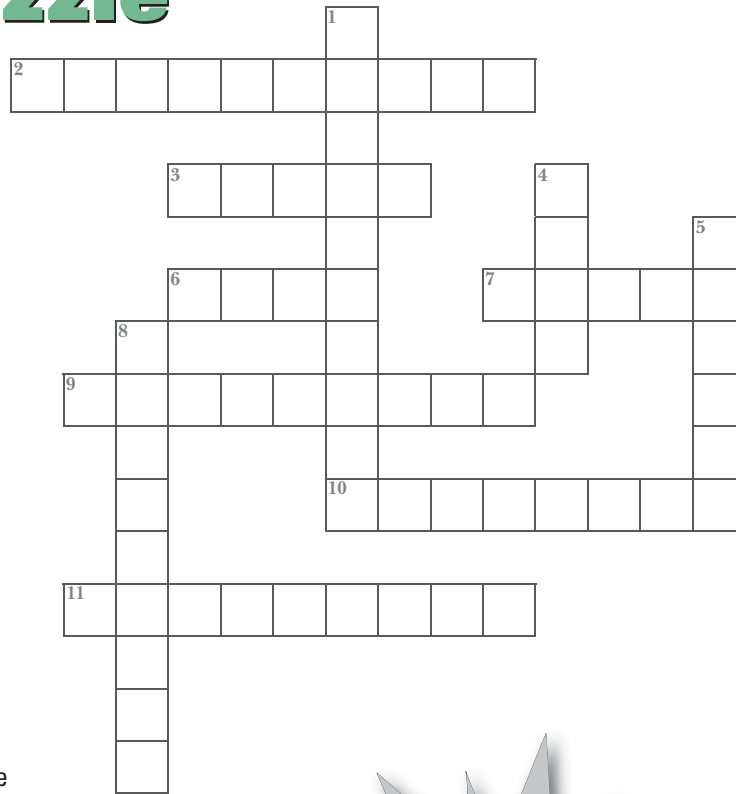
# Energy Puzzle

## Across:

- 2 These gases make the earth warmer
- 3 It's a dangerous mix with electricity
- 6 It's burned to make electricity
- 7 This color is a symbol of the environment
- 9 Don't stand under a tree if you see this in the sky
- 10 What to do if you see a downed power line (2 words)
- 11 These use wind to produce energy

## Down

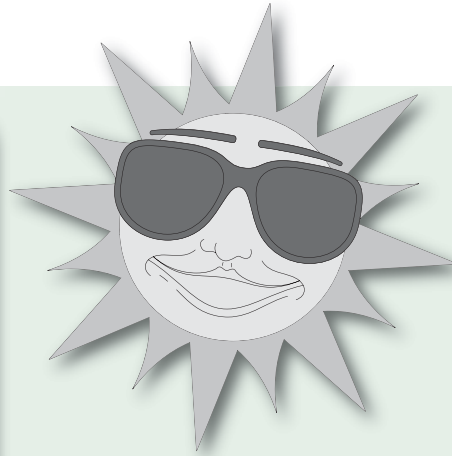
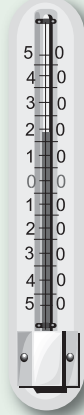
- 1 Keep kites away from these (2 words)
- 4 Never pull a plug out by this
- 5 This is involved whenever something moves, cools or heats up
- 8 Many types of fuel move through these



# Hot stuff

The sun is the earth's biggest source of energy. You can try lots of experiments with the sun's energy, like finding out if it is really hotter in the sun than in the shade.

1. Hang a thermometer in the shade for five minutes. Write down the temperature.
2. Hang the thermometer in the sun for five minutes. How do the two temperatures compare? ■



# Name the conductors

What is a conductor? When you're talking about energy, a conductor is a material that lets electricity flow through it.

Human beings are conductors because electricity can pass through the body. It hurts, though, and could leave you with ugly, severe burns. So protect yourself: if you see lightning bolts in the sky, come inside. And if a power line is knocked down, stay away and have an adult report it to us. ■

## Name these conductors:

M E \_ \_ \_

W \_ T \_ \_

\_ \_ O U N \_

Y O \_ \_ B \_ \_ Y

# See the sites

Have you heard about fish whose electric shocks can stun an adult? How about a ZEV? Find out all about them at these fun energy sites for kids:

- <http://lgeku.energyunderground.com>
- <http://www.eon-us.electricuniverse.com/>
- <http://www.energyquest.ca.gov/>
- <http://www.eia.doe.gov/kids/>

## CONTACT INFORMATION

### Louisville Gas & Electric Company

Monday – Friday  
(7 a.m. – 7 p.m.)  
(502) 589-1444

Outside Louisville area  
(800) 331-7370

For hearing/  
speech-impaired  
Dial 711

24-hour Natural Gas  
Trouble/Emergencies  
(502) 589-5511

24-hour Electric  
Trouble/Power Outages  
(502) 589-3500

### Customer Service Center

701 South Ninth Street  
Monday – Friday  
(8 a.m. – 5 p.m.)

### Business Service Center

Monday – Friday  
(7 a.m. – 6 p.m.)  
(502) 627-3313

Outside Louisville area  
(800) 331-7370

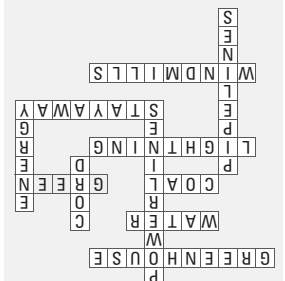
Kentucky 811-  
Locate Service  
Dial 811

### Editor

Cheryl Williams  
@eon-us.com

Visit our website at  
[www.eon-us.com](http://www.eon-us.com)

YOUR BODY  
GROUND  
WATER  
METAL  
Name the conductors:



Energy Puzzle  
Answers