



# POWERSOURCE

Customers first. Energy that lasts.

## KIDS' ISSUE!

### Get Connected!

Each of us can make a big difference in our world by using energy wisely and safely. Learn everything you need to know about energy, including how you can reduce outdoor pollution, keep your friends and family safe, and become more energy efficient in your home. Visit these websites and start today!

Kids Connection

[www.eon-us.com/kids](http://www.eon-us.com/kids)

U.S. Department of Energy

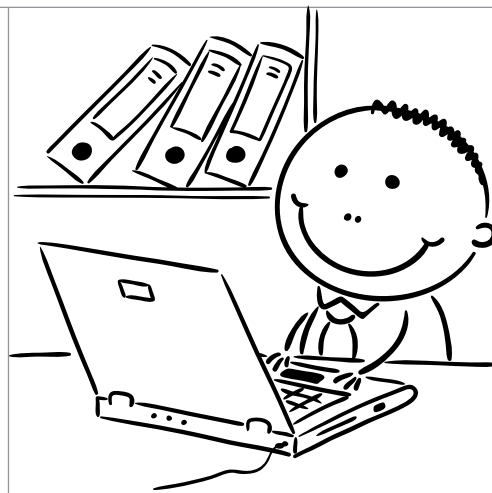
[www.energy.gov/forstudentsandkids.htm](http://www.energy.gov/forstudentsandkids.htm)

ENERGY STAR®

[www.energystar.gov](http://www.energystar.gov)

Energy Information Administration

<http://www.eia.doe.gov/kids/>



### Be tech savvy: Report streetlight outages online

Did a streetlight close to your home go out? You can report this online 24 hours a day, 7 days a week. It's easy! Tell your parents to visit [www.eon-us.com](http://www.eon-us.com) and ask them to read these instructions:

Log in to your account using your User ID (your e-mail address) and your password. Click your account link, then "Service Requests." You will see the "Street Lights" link, which takes you to a page that lists some questions about the light. Once you submit your request, we'll schedule a crew to service the light.

New users can visit [www.eon-us.com](http://www.eon-us.com) and click "Login" under "Manage your account." To register, you will need your account number, billing zip code and personal identifier (most often the Social Security number for the primary person listed on the account) for account verification purposes. For business accounts, the personal identifier typically is the company's Federal Tax Identification number.

## Energy Scramble

LYCTCRIEEIT

HINT: It helps make things bump, whirr, buzz or ting!

ISGLTH

HINT: Without these, it would be hard to see at night.

ATTW

HINT: It is how power is measured, and it sounds like a question.

FLC

HINT: It's more efficient than an incandescent light bulb.

WEOPR

HINT: It means energy, force or momentum.

Answers:  
ELECTRICITY  
LIGHTS  
WATT  
CFL  
POWER

# Energy Adventures!

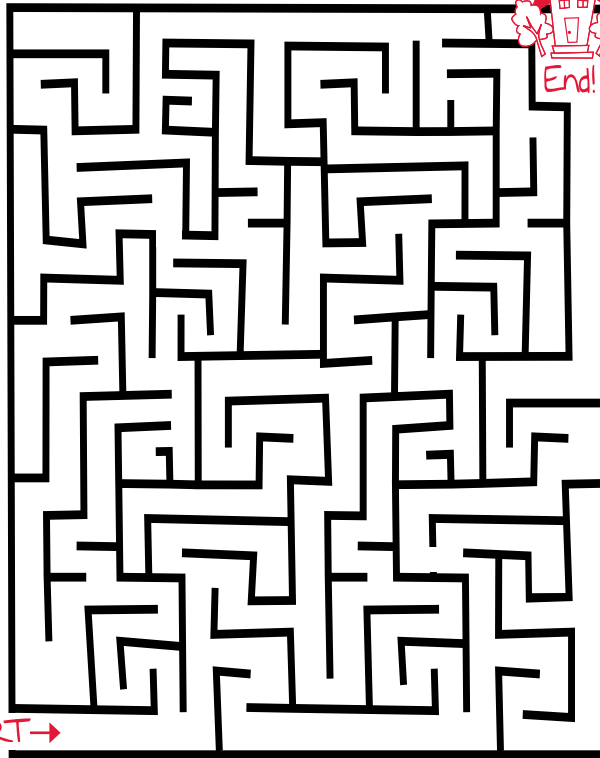
We use a lot of energy for most things we do. Video games, night lights, TVs, computers and even hot water – energy makes all of these possible. Our energy use does have an effect on our environment, so it is everyone's responsibility to be careful not to waste energy.

You can make a powerful difference on our environment by doing some very simple things around the home. Take an energy adventure walk! Go through the house and count how many things you find that use energy. Look for anything that has a light or makes a noise.

How many did you find? Five, 12, 20? Now go through again and see if those things really need to be on. If not, turn them off, and you've just taken the first step toward helping our environment.

Find your way home to save energy!

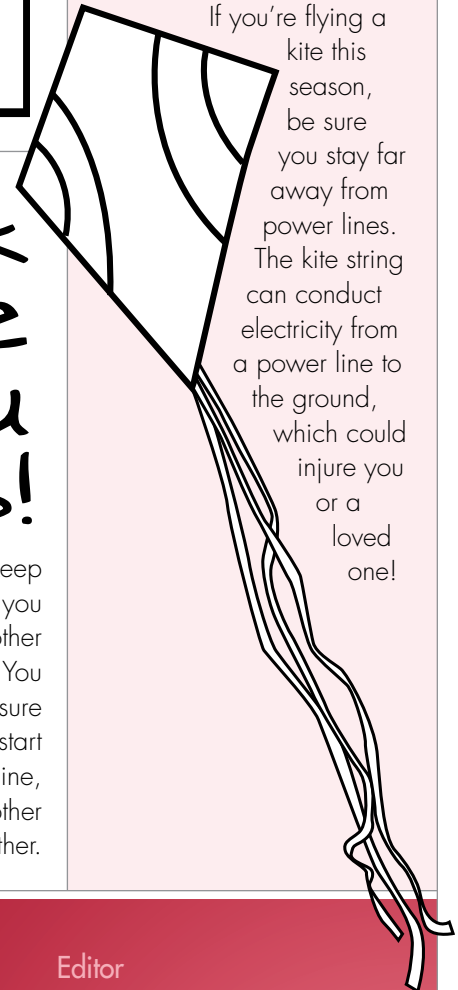
START →



# Fly the Skies with Care

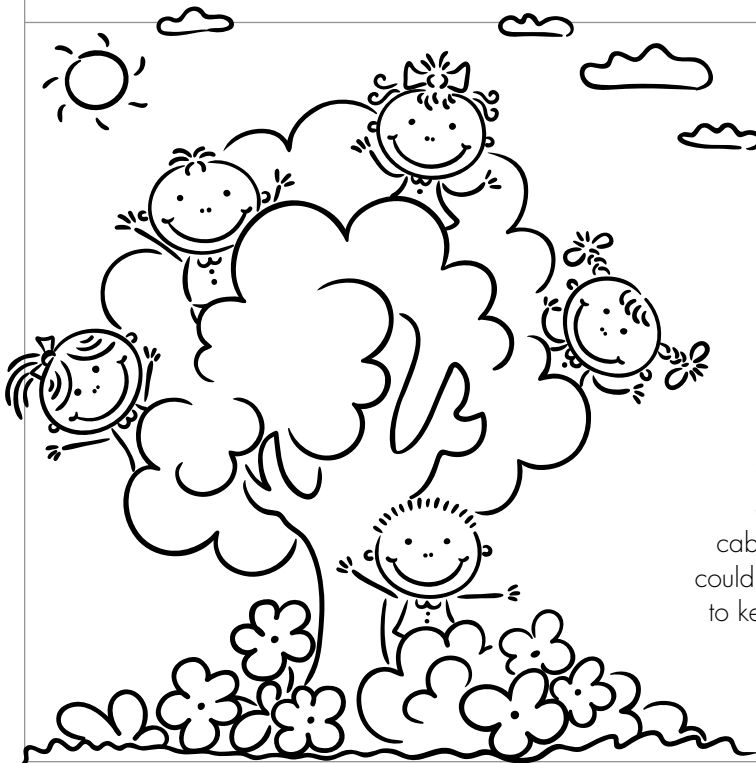
Ben Franklin had it right; lightning is energy, which he discovered when his kite conducted electricity. His scientific efforts led to great innovations for our time. However, his experiment was dangerous!

If you're flying a kite this season, be sure you stay far away from power lines. The kite string can conduct electricity from a power line to the ground, which could injure you or a loved one!



# Look Before you climb!

Love to climb trees? Be sure to keep yourself safe first. Look up before you climb! If you see power lines or other cables close to the tree, don't climb! You could get a shock and get hurt. Make sure to keep your friends safe, too. If they start climbing a tree next to a power line, tell them to stop and find another tree together.



## Contact Information

Old Dominion Power  
ODP Customer Service  
Monday – Friday  
7 a.m. – 7 p.m. (EST)  
(800) 981-0600

[www.twitter.com/eonus](http://www.twitter.com/eonus)



24-hour Power Outages  
(800) 981-0600

Business Service Center  
Monday – Friday  
7 a.m. – 6 p.m. (EST)  
(859) 367-1200  
(800) 383-5582

Editor  
Cheryl.Williams@eon-us.com  
Visit our website  
[www.eon-us.com](http://www.eon-us.com)

